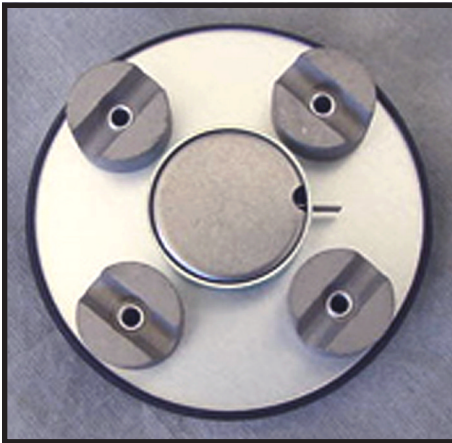
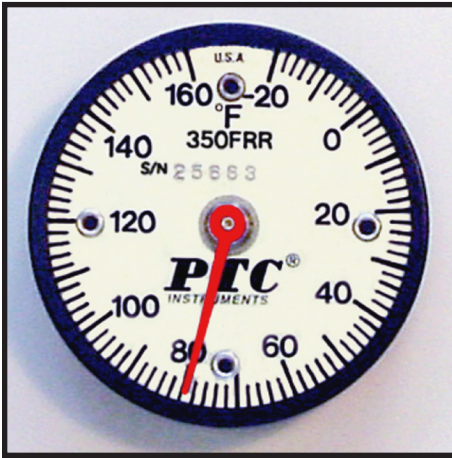




Industrial Railroad Surface Thermometers



Made In U.S.A.

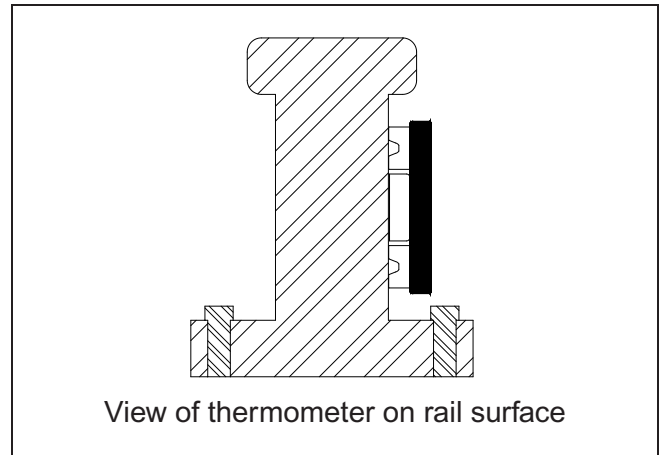


Railroad surface thermometers feature a serialized dial, protective cap for the bimetal sensor, and a powerful 4-magnet base

Applications include:

Surface temperature measurement for rail fabrication; weld preheats; foundry boxes; annealing ovens and furnaces; motors, generators, engines, and bearings; dies and molds; platens, hot plates, and griddles; boilers, tanks, and drums; or any application where a surface temperature needs to be monitored.

- **Conforms to AREMA Specifications**
- **4-Magnet Base for Superior Holding Power**
- **Accuracy of $\pm 2\%$ of Full Scale Range**
- **NIST Certification Available**
- **Every Unit Individually Calibrated**
- **Reliable Bimetallic Sensor**
- **Single or Dual Max-Min Hands Available**



PTC® Industrial Railroad Thermometers conform to AREMA Specifications and are engineered to measure surface temperatures. Four alnico magnets form a base providing increased holding power.

The Models 350, 312, 315, and 330 FRR & CRR have a Lexan® plastic lens cover and a red indicating pointer. The Models 313 and 314 FRR & CRR have a glass cover and a black indicating pointer. The aluminum dials have easy to read scales and are individually serialized.



TOLL FREE: 877-782-2329
OUTSIDE U.S.: 310-478-1134
LOS ANGELES, CA 90064-1482

WEB: [HTTP://WWW.PTC1.COM](http://www.ptc1.com)
E-MAIL: SALES@PTC1.COM
FAX: 310-312-0826

SPECIFICATIONS

Available models and temperature ranges

MODEL	RANGE °F	DIV.		MODEL	RANGE °C	DIV.
350FRR	-20°F to +160°F	2°		350CRR	-30°C to +70°C	1°
312FRR	0°F to 250°F	2°		312CRR	-20°C to +120°C	1°
313FRR	0°F to 500°F	5°		313CRR	-20°C to +250°C	2°
314FRR	50°F to 750°F	10°		314CRR	10°C to 400°C	5°
315FRR	0°F to 150°F	1°		315CRR	-15°C to +65°C	1°
330FRR	-100°F to +160°F	2°		330CRR	-70°C to +70°C	2°

Accuracy.....±2% of full scale range.

Dimensions:

Diameter 2 in. (5.1 cm).

Height 1/2 in. (1.3 cm).

Weight 2 oz. (57 g).

Shipping weight 1 lb. (454 g).

Certification to N.I.S.T. available for nominal cost.

For single Max or Min Hand, add an 'L' to the model number.

For dual Max-Min Hands, add 'MM' to the model number.

OTHER SURFACE THERMOMETERS

⇒ **Fully Enclosed Ultra-Magnetic Surface**

Two ranges -20/160°F & 0/150°F
 13 lb. holding power (70 times its own weight)
 See our website for ranges and info

⇒ **Tank Thermometer**

Monitor the filling of industrial tanks
 Many ranges available - visit our website for list and info

⇒ **Dual Magnet Mount**

Perfect for applications not requiring extra holding power
 See our website for a list of ranges and info

⇒ **Spot Check® Surface**

Direct contact design gives the fastest surface readings possible
 Visit our website for ranges and info



TOLL FREE: 877-782-2329
 OUTSIDE U.S.: 310-478-1134
 LOS ANGELES, CA 90064-1482

WEB: [HTTP://WWW.PTC1.COM](http://www.ptc1.com)
 E-MAIL: SALES@PTC1.COM
 FAX: 310-312-0826

Distributed by:



AB: (587) 758-8367

info@stone-tucker.com

ON: (905) 688-5800

www.stone-tucker.com