

Bresle Chloride Kit

SP7310



Product Description

The TQC Bresle Kit - Chloride Test Kit includes all the necessary equipment for assessing the level of soluble salts on blast-cleaned surfaces prior to coating. Inside the Bresle KIT - Chloride Test Kit is a conductivity gauge used for the assessment of all water soluble salts such as: chlorides, sulfates, nitrates contribute to the conductivity measurement. The Bresle KIT complies with the ISO 8502-6 and ISO 8502-9 standards, describing the Bresle Method, that state that the conductivity is mainly directly proportional to the concentration of dissolved salts in the solution.

Contamination of blast-media

The Bresle Kit is also suitable to determine the contamination of blast-media in use. This to prevent that the dissolved salts in the recycled abrasive media or water will not re-contaminate the surface being cleaned.

Business

Marine coatings, Protective coatings, Pipeline coatings.

Standards

According to ISO8502-6, ISO8502-9. Look up the appropriate standard for a correct execution of the test.

Feature

Unique Direct Sampling Procedure (DSP) to ensure high speed and accuracy. Up to 60 times more accurate than other test kits available.



Bresle Patches
(box of 25 pieces)

Scope of supply

The Bresle kit is complete with

- Case
- Digital Conductivity meter
- 25 bresle patches
- Distilled water
- Calibration and Cleansing Solutions
- Cups and syringes
- Pictorial manual

Ordering information

SP7310 TQC Sheen Bresle Kit

Accessories

HI0017 Conductivity Meter waterproof Multi Range Tester

LD6504 Bresle Patch (box of 25 pieces)

SP4550 Cup 50ml (pmp) for Bresle KIT

SP4551 Cup 250 ml (pmp) for Bresle KIT

SP7001 MWY514 plastic cups (20x) for Bresle KIT

SP7100 MWY514 plastic cups (25x) for Bresle KIT

SP7105 MWY514 plastic cups (100x) for Bresle KIT

SP7932 Waste bottle for Bresle KIT

SP7320 Calibration Solution 84 µS, bottle of 50ml

SP7321 Maintenance Cleansing Solution, bottle of 50ml

SP7933 Magnetic Bresle Test spot marker

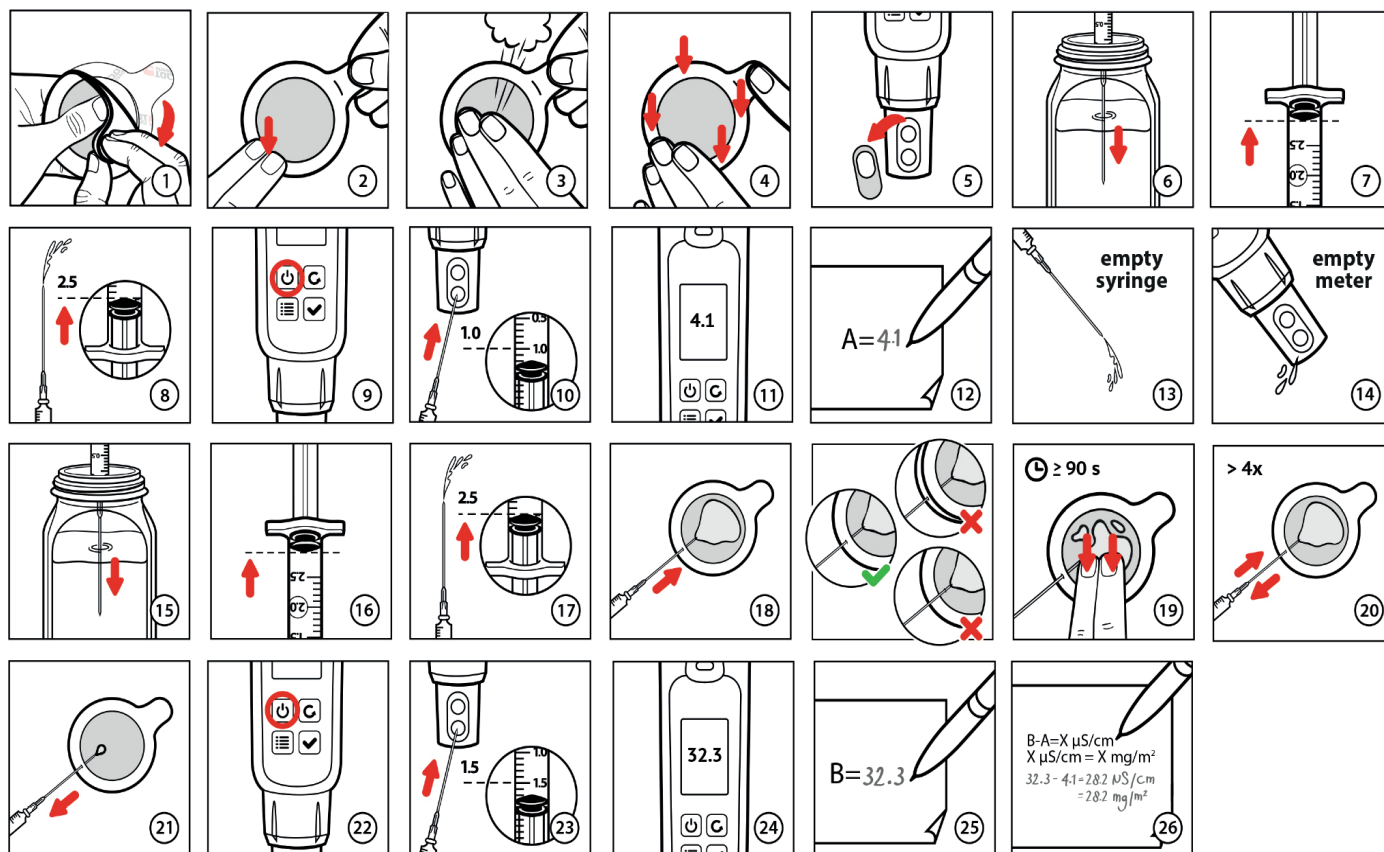
Specifications

Range	0,1 – 20.000 mg/m ² (with DSP method)
Resolution	0,1 mg/m ² (with DSP method)
Accuracy	1% accuracy of gauge
Temp. range	0 – 50 °C
ATC	0 – 50 °C
Normalization temp.	25 °C

Auto off	8.5 minutes after last key pressed
IP class	IP67
Auto calibration at	84 $\mu\text{S}/\text{cm}$
Patch area	12,50 cm^2
Patch type	Latex membrane

Range	Resolution
0-200.0 μS	0.1 μS
200-2000 μS	1 μS
2.0-20.00 mS	0.01 mS

Use



Special care

- Always clean the instrument after use.
- Depending on the frequency of use, a thin film may occur on the probe. Use a clean cotton swap and cleansing solution to remove this.
- Always keep the instrument in its case when not in use.
- We recommend annual calibration

TQC Sheen - Bresle Chloride Kit

web. www.industrialphysics.com

email. info-ic@industrialphysics.com

Phone +31 (0)10 7900 100

Disclaimer:

The information given in this sheet is not intended to be exhaustive and any person using the product for any purpose other than that specifically recommended in this sheet without first obtaining written confirmation from us as to the suitability of the product for the intended purpose does so at his own risk. Whilst we endeavour to ensure that all advice we give about the product (whether in this sheet or otherwise) is correct we have no control over either the quality or condition of the product or the many factors affecting the use and application of the product. Therefore, unless we specifically agree in writing to do so, we do not accept any liability whatsoever or howsoever arising for the performance of the product or for any loss or damage (other than death or personal injury resulting from our negligence) arising out of the use of the product. The information contained in this sheet is liable to modification from time to time in the light of experience and our policy of continuous product development.